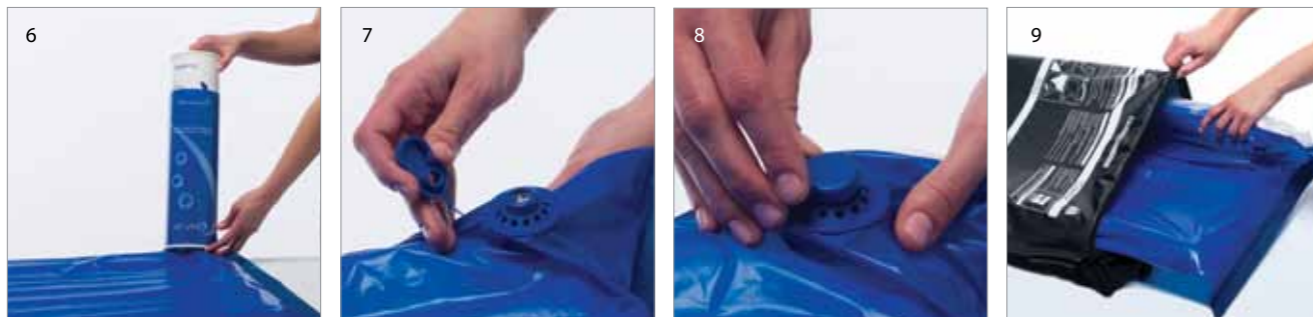


User Instructions - How to inflate and assemble Repose Contur



- Remove the Repose Contur inflatable inner section from the tube, refit the two tubes together to form a pump. (2)
- Connect the valve on the pump to the valve on the device - Push to fit. (3-4)
- Inflate Repose Contur inflatable inner section until you hear air exhausting from the pump valve. Discontinue pumping and wait until you no longer hear air escaping. (5-6)
- Disconnect the pump. Cover the valve on the device using the solid end of the valve cap. (7-8)
- Lay Contur cover out with zip side up. (9)
- Fold the Repose Contur inflatable section lengthways, insert into Contur cover and lay flat with blue face up, and valve at head end. Close zip at both ends. (10-12)

How to fit Repose Contur to a Riser Recliner Chair

- Ensure that the Repose Contur is positioned correctly before securing. The instructions side faces the chair.
- Insert fixing straps between the seat and arm rest, looping around the back of the chair. (13-18)
- Cross fixing straps as shown. (19-21)
- Loosely clip the fixing straps into place.
- When both straps are clipped in place adjust until secure. (22-23)
- Loop bottom fixing straps around either side of the foot rest until secure. (24)
- Ensure that the valve is facing into the chair at the head end.

