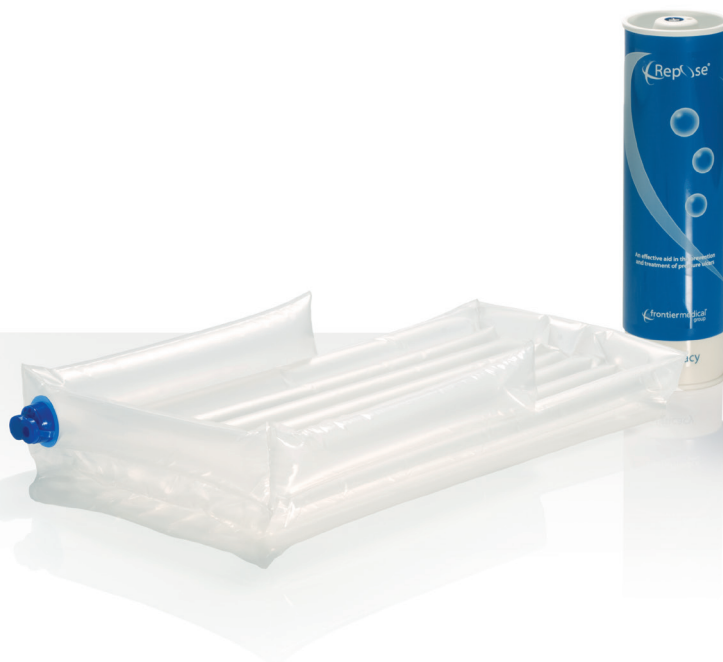


Repose[®] Babynest

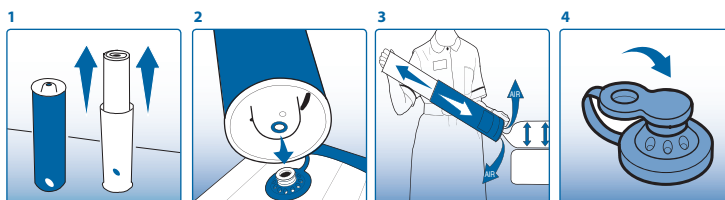
Order Code: 6801101

Provides pressure relief for delicate and friable skin



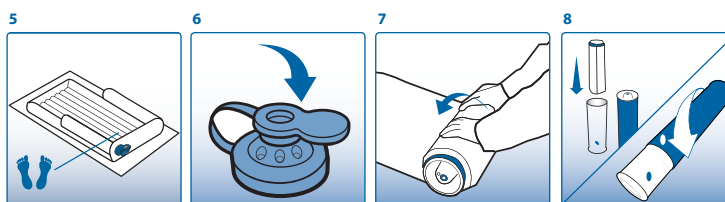
Inflation and Deflation Instructions

- 1 Remove the device from the tube and refit the two tubes together to form a pump.
- 2 Connect the valve on the pump to the valve on the device - Push fit.
- 3 Inflate the device until air is heard escaping from the pump valve.
- 4 Cover the valve on the device using the solid end of the 'figure of eight' valve cap.
- 5 Turn device over with valve underside and away from patient.



NOTE: Check device daily to ensure proper inflation level. In case of doubt, repeat pumping procedure above with the user off the product.

- 6 Insert the open end of the 'figure of eight' valve cap into the device valve. Air can now escape from the valve allowing the device to deflate.
- 7 Roll up the device starting at the point furthest away from the valve. Continue until all the air is expelled. Clean the device and allow to dry. Replace device into the pump.
- 8 Refit the two tubes together and rotate outer tube until it clicks closed.



Cleaning Instructions

Indications for use

Repose products provide effective pressure redistribution for all persons at risk of developing pressure ulcers, including those assessed as very high risk.

Repose is also appropriate for users with pressure related tissue damage - clinical supervision is advised where the damage is severe, in-line with NPUAP-EPUAP Pressure Ulcer Treatment Clinical Practice Guidelines 2009.

Limitations for use


Repose is not suitable for the following:


- Babies weighing in excess of 3kg (There is no lower weight limit)
- Persons with unstable spinal fractures
- Where body shape is such that the person cannot be fully supported by the Repose Babynest

Precautions


- If deterioration in skin condition is noted, clinical advice should be sought and, if so advised, discontinue use of product
- Avoid direct contact with heat and sharp objects
- When deflated, keep away from babies and small children
- Keep away from pets

REPOSE PRODUCTS CAN BE CLEANED AND REUSED







WIPE CLEAN



DO NOT DRY CLEAN



DO NOT TUMBLE DRY



DO NOT IRON

REPOSE PRODUCTS CAN BE CLEANED WITH SOAP OR DETERGENT AND WATER OR IN ACCORDANCE WITH LOCAL INFECTION CONTROL POLICY. RINSE WITH CLEAN WATER AFTER USING DISINFECTANT. ALLOW TO DRY BEFORE USE OR STORAGE. REPOSE IS SUPPLIED WITH A MANUFACTURERS WARRANTY OF 24 MONTHS FROM DATE OF DISPATCH.

IMPORTANT

CHECK PRODUCT DAILY TO ENSURE CORRECT INFLATION LEVEL. IN CASE OF DOUBT, REPEAT INFLATION PROCEDURES WITH THE PATIENT OFF THE PRODUCT. KEEP AWAY FROM SHARP OBJECTS AND DIRECT HEAT.