



Repose® Companion

Order Code: REP48040

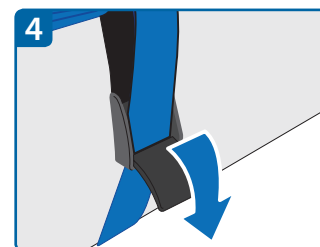
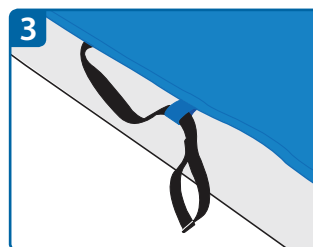
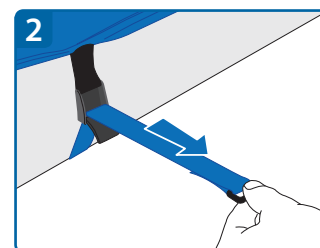
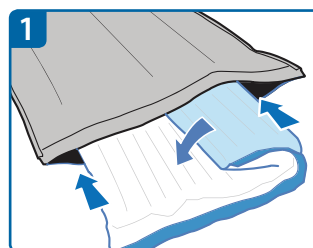


A universal support surface combining safe and easy lateral transfers with pressure area care

Repose Companion is designed to travel with the patient throughout their hospital journey and is suitable for use with stretchers and beds.

User Instructions

- 1 Ensure that the surface and pulling straps are clean and dry, ready for use.
- 2 Inflate Repose Mattress (see pump for details) and fold lengthways, insert into Companion cover and lay flat with valve face down at head end. (See fig. 1)
- 3 Close zip at both ends.
- 4 Secure Companion to the appropriate surface using the blue draw straps provided. (See fig. 2)
- 5 Tuck black and blue straps into the loops provided, to avoid trip hazard. (See fig. 3)



Patient Transfer User Instructions

- 6 Release blue draw straps. (See fig. 4)
- 7 Place bridging board between departing and destination surfaces.
- 8 Position all black pulling straps appropriately.
- 9 Adopting recommended procedures use the black pulling straps to pull the patient to the destination surface.
- 10 Secure Companion to destination surface using blue draw straps. (See fig. 2)
- 11 Tuck black and blue straps into the loops provided, to avoid trip hazard. (See fig. 3)

IMPORTANT

ONLY USE REPOSE MATTRESS WITH REPOSE COMPANION COVER.

CHECK INTERNAL REPOSE MATTRESS REGULARLY TO ENSURE CORRECT INFLATION - SEE PUMP FOR DETAILS.

REPOSE COMPANION CAN BE CLEANED AND REUSED.

DO NOT USE COMPANION AS A SLING.

CLEANING INSTRUCTIONS



HAND WASH



LAUNDER
< 10 MINUTES
(COVER ONLY)



DO NOT
DRY CLEAN



DO NOT
TUMBLE DRY



DO NOT
IRON

THE MATTRESS AND COVER MAY BE CLEANED IN ACCORDANCE WITH THE REVISED HEALTHCARE CLEANING MANUAL JUNE 2009. FREQUENT AND PROLONGED EXPOSURE TO HIGH CONCENTRATION DISINFECTANT SOLUTION MAY REDUCE THE USEFUL LIFE OF THE MATTRESS AND COVER. APPLY A CLEAN WATER RINSE FOLLOWING DISINFECTION AND ALLOW TO DRY.

REPLACE IF PRODUCT DAMAGED OR THREADBARE.

FOR FURTHER INFORMATION VISIT
www.macmedhealthcare.com

IMPORTANT NOTICE



REPOSE WORLD WIDE PATENT PENDING

FLAME RETARDANT - COMPLIES WITH BS7175 AND
BS7177 IGNITABILITY SOURCE CRIB 5



www.macmedhealthcare.com

1300 942 552